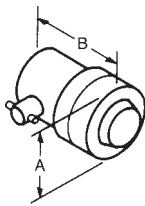


Contact Transducers

Single Element Contact Transducers are longitudinal wave transducers designed for general purpose manual ultrasonic inspection where test materials are relatively flat and smooth. Contact transducers provide high sensitivity for better penetration and are ruggedly constructed for extended service life under the roughest testing conditions.

PMCR and PMCS Style Contacts

Protective Membrane Contact Transducers are excellent for coupling to rough or uneven surfaces. The membrane will conform to surface irregularities providing better coupling to the test material. PMCR and PMCS Style contacts are designed for quick, easy membrane replacement and have color-coded grips identifying transducer frequency. The PMCR Style has right angle BNC connectors while the PMCS Style has straight top-mount BNC connectors.



Element Diameter	A	B
.500	1.13	1.75
.750	1.41	1.75
1.000	1.63	1.75
1.125	1.63	1.75

Protective Membrane Transducers— PMCR/PMCS Style

Freq. (MHz)	Size (in.)	PRODUCT CODES			Freq. (MHz)	Size (in.)	PRODUCT CODES		
		Gamma Series	Membranes 1 dozen	Accessories			Gamma Series	Membranes 1 dozen	Accessories
1.0	.500	241-241-PMCR 241-261-PMCS	PM-020	Cables 6' BNC C-016 6' LEMO C-018 Membrane Couplant XD-740	3.5	.500	243-241-PMCR 243-261-PMCS	PM-020	Cables 6' BNC C-016 6' LEMO C-018 Membrane Couplant XD-740
	.750	251-241-PMCR 251-261-PMCS	PM-021			.750	253-241-PMCR 253-261-PMCS	PM-021	
	1.00	261-241-PMCR 261-261-PMCS	PM-022			1.00	263-241-PMCR 263-261-PMCS	PM-022	
	1.125	271-241-PMCR 271-261-PMCS	PM-023						
2.25	.500	242-241-PMCR 242-261-PMCS	PM-020		5.0	.500	244-241-PMCR 244-261-PMCS	PM-020	
	.750	252-241-PMCR 252-261-PMCS	PM-021			.750	254-241-PMCR 254-261-PMCS	PM-021	
	1.00	262-241-PMCR 262-261-PMCS	PM-022			1.00	264-241-PMCR 264-261-PMCS	PM-022	
	1.125	272-241-PMCR 272-261-PMCS	PM-023						

